

# Eagle™ M730

## Overview

---

**Frequency Band**

UHF 860 - 960 MHz

---

**Chip**

Impinj M730

---

**Antenna Dimensions**

44 x 28 mm / 1.70 x 1.10 in

---

**International Standard**

ISO 18000-63, EPC Class 1 Gen 2

---

**Industry Segments**

Apparel  
Logistics

---

**Applications**

Supply Chain Management  
Brand Protection  
Home Essentials

---

**RoHS**

EU Directive 2011/65/EU and  
Directive (EU) 2015/863

---

**REACH**

Regulation (EC) No. 1907/2006



## Top read range for retail applications

Our Eagle™ M730 is one of the smallest UHF RFID inlays with superior global RF performance for apparel and retail applications. Having a compact size 44 x 28 mm which can be easily converted into end application usage, Eagle is available in dry, wet and label delivery formats.

Eagle™ products are available with the Impinj M730 and M750 ICs, offering high performance across different materials and challenging environments due to enhanced adaptive RF tuning features. The Impinj M730 IC has 128-bit EPC memory, and the Impinj M730 IC has 128-bit EPC memory. The Impinj IC is compatible with the global GS1 UHF Gen2v2 standard, which ISO/IEC standardized as 18000-63.

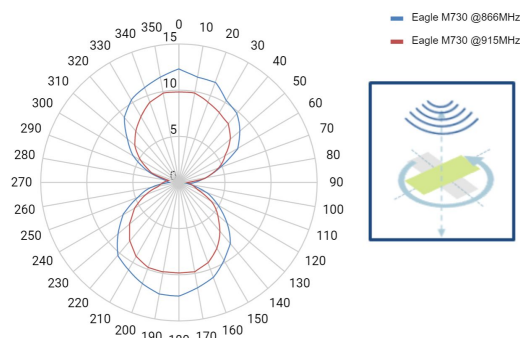
Eagle with both Impinj M730 and M750, is included on the approved retail application inlay list by the RFID Research Center (ARC) of the University of Auburn, and complies with categories F, G, I, K, M, Q, N, L, W1, W2, W3, W4, W5, and W6.

Our inlays and tags are compliant with ISO 9001:2015 Quality Management and ISO 14001:2015 Environmental Management, which ensure a reliable and state-of-the-art product that meets a variety of application needs, especially in the retail environment.

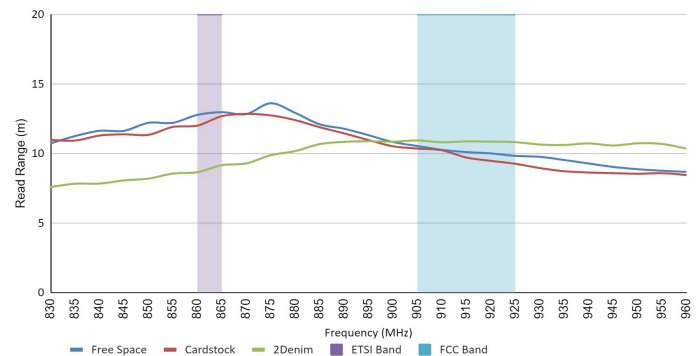
## Technical features

Chip	Impinj M730		
EPC and User Memory	128-bit and 0		
TID Memory	96-bit / 48-bit unique serial number		
Product Code	3008000 / IL-603995	3007992 / IL-603988	3007993 / IL-603989
Delivery Format	Dry inlay	Wet inlay	Label
Die-Cut Dimension	–	47x31 mm / 1.85x1.22 in	47x31 mm / 1.85x1.22 in
Inlay Substrate	PET	PET	PET
Face Sheet	–	–	Mid-gloss paper
Standard Pitch	34 mm / 1.339 in	34 mm / 1.339 in	34 mm / 1.339 in
Web Width	50 mm / 2 in	50 mm / 2 in	50 mm / 2 in
Core Size	76 mm / 3 in	76 mm / 3 in	76 mm / 3 in
Quantity / Reel	18,000 pcs/reel 90,000 pcs/box	15,000 pcs/reel 30,000 pcs/box	3,200 pcs/reel 6,400 pcs/box
Operating Temperature	-40 °C to 85 °C / -40 °F to 185 °F	-40 °C to 85 °C / -40 °F to 185 °F	-40 °C to 85 °C / -40 °F to 185 °F
Certificates	ARC		

## Orientation sensitivity



## Read range



All graphs are indicative: performance in real life applications may vary.

### Contact information

[rfid.averydennison.com/contact](http://rfid.averydennison.com/contact)  
+1-678-617-2359

Connect with us on:



© 2021 Avery Dennison Corp. All rights reserved. 170 Monarch Lane, Miamisburg, OH 45342, USA Third party trademarks and/or trade names used herein are the property of their respective owner(s). Some of the trademarks appear for identification purposes only.

**Warranty:** Please refer to Avery Dennison standard terms and conditions: [rfid.averydennison.com/termsandconditions](http://rfid.averydennison.com/termsandconditions)

**Care and handling:** RFID inlays are sensitive to ESD. Observe standard industry practices relating to electronics / RFID to keep environmental impact and static charge to a minimum.

**Applications:** This product should be tested by the customer / user thoroughly under end use conditions to ensure the product meets the particular requirements. Avery Dennison does not represent that this product is fit for any particular purpose or use. Avery Dennison reserves the right to modify, change, supplement or discontinue product offerings at any time without notice. The information contained herein is believed to be reliable but Avery Dennison makes no representation concerning the accuracy or correctness of the data.

