

Accessory RFID Label

Dipole ACCESSORY is a family of small and sensitive labels that can be used in multiple RFID applications.

The family of RFID tags for accessories are ideal when we need to identify small items and read numerous tags at the same time: jewelry, glasses, cosmetics and all kinds of accessories. This family of labels is perfectly detectable with RFID anti-theft systems. Improve times in inventories, shipments and

receipts of merchandise, sales and optimize stocks. Reduces management costs, delete human errors and increases the security of accessories and complements.

Product benefits

- Possibility of tracking the product
- Fully customizable
- Easy to use and application
- Worldwide delivery

01

The applications and preferred uses of RFID tags are:

- Complements
- Sunglasses
- Jewelry
- Watchmaking



02

Product details

Frecuency	UHF (860 - 960 MHz)
IC type	Impinj / NXP
EPS Memory	Depending of IC Family
Material	PP
Standards	ISO 18000-6C Class 1 Generation 2
Adhesive	All permanent and removable types
Size	Fully customizable
Temperature	-40 °C / +85 °C

03

Product features



Customizable label designed to achieve the best solution for your needs.



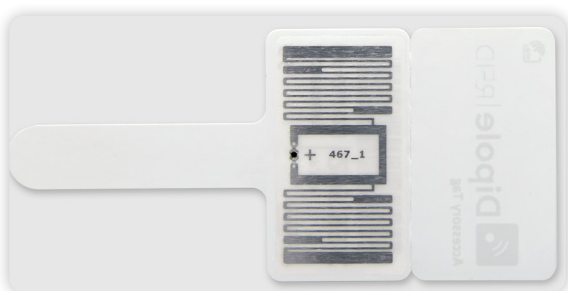
Printable on all standard RFID printers worldwide.



Different internal IC depending on the memory that is required.



Multiple delivery formats for greater comfort and according to need.



Headquarters

Corts Catalanes nº8, 5C
08173 - Sant Cugat.
Barcelona, España
www.dipolerfid.es

In the world

Spain: +34 936 756 273
France: +33 1 85 65 81 50
USA: 203-219-4889
dipole@dipole.es

All rights reserved. Total or partial reproduction is prohibited without the prior written consent of the copyright owner. The information presented in this document does not form part of any quotation or contract, is believed to be accurate and reliable and may be changed without notice.